

## Corrosion-resistant polycarbonate luminaires

IP65 luminaires with injection moulded polycarbonate body and frosted prismatic polycarbonate cover, both fire-retardant.

Applications: cold stores, printing works, water treatment plants and pump rooms, industrial process areas, shower rooms and toilet blocks.

- Smooth easy-clean lines
- Snug-fit polycarbonate cover clips (stainless steel option)
- Fast installation via external stainless-steel brackets preserves IP rating
- Factory fitted 4-core through wiring option (alternative configurations to special order)
- Suitable for external applications if mounted under a canopy
- Complies with M.O.D. JSP482 Chapter 8 Document for 'Category C' areas
- SmartScan wireless technology removes the need for control cabling. Ideal for retro-fit

Notes: For ambient temperatures below the stated minimum contact the Thorlux Technical department



Up to IP65

Up to 132.4 LL/CW

SMARTSCAN

### Specification

Mounting	Surface	IP rating	Up to IP65
Max presence detection height	8 m		

### Lighting

Optic	Frosted prismatic cover	Lumen output	3,700 lm - 9,535 lm
Efficacy	Up to 132.4 LL/CW		

### Emergency data

Emergency lumen output	435 lm - 640 lm	Emergency type	Maintained
Emergency duration	3 hours	Battery specification	Nickel Metal Hydride (NiMH)

### Power

LED power	23 W - 60 W	Circuit power	31 W - 72 W
-----------	-------------	---------------	-------------

## LED characteristics

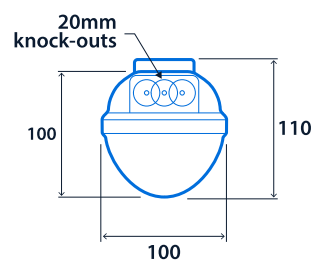
CRI	80+	Colour temperature	4000 K
Rated life (hours)	100 K - L70/B10		

## Compliance

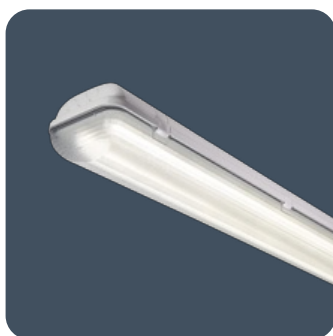
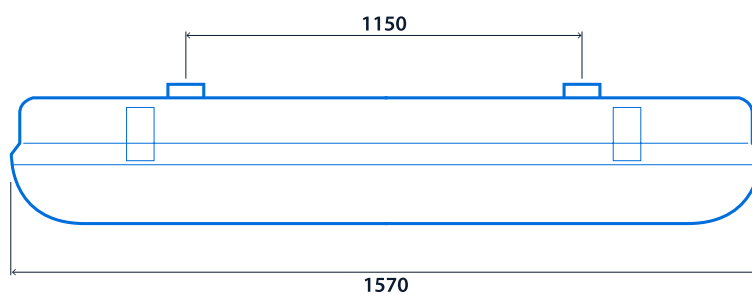
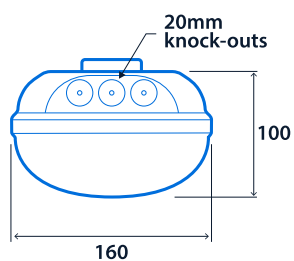
UKCA	Yes	CE	Yes
C-Tick (Aus)	Yes	D Mark	Yes
Food production standards	HACCP IFS	MOD compliance	JSP482 Chapter 8 Document for 'Category C' areas

## Dimensions

Narrow Body



Wide Body





**Click or scan here**  
View Thoroproof variants  
using our online filtering tool



Information is correct as of 17 Feb 2025, however must not be interpreted as a guarantee of individual product performance and/or characteristics. We reserve the right to alter specifications and designs without prior notice.